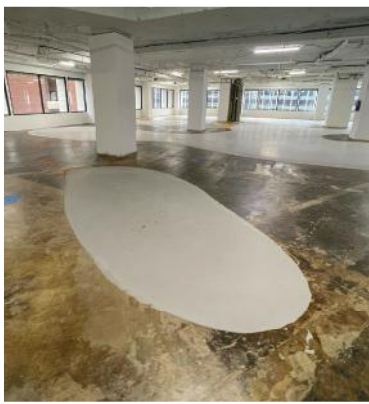
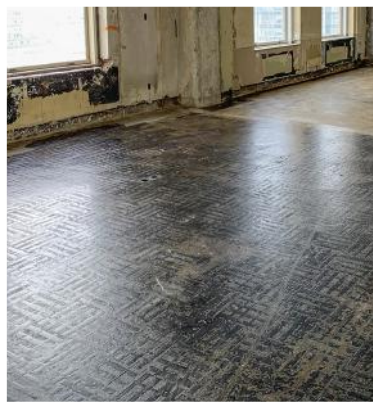


EXCEED EXPECTATIONS



EXCEPTIONAL RESULTS AWAIT



SUITABLE OVER
ADHESIVE RESIDUE*
AND COMPROMISED
SUBSTRATES

*REFERENCE
DATASHEET



FACILITATES TIGHT
SCHEDULES WITH
REDUCED SURFACE
PREPARATION



HIGH-STRENGTH,
HIGH-DENSITY,
PUMPABLE
UNDERLAYMENTS



SUITABLE FOR TILE,
LVP, LVT, CARPET,
WOOD, COATINGS
AND MORE



PLATFORM™ PERFORMANCE CEMENT

1-800-227-3434

info@profloorprep.com

profloorprep.com

Contact us, or scan QR Code
to visit us online!



SCAN FOR SITE



ENGINEERED TO PERFORM IN JOBSITE CONDITIONS, OUR HYDRAULIC CEMENT TECHNOLOGY OFFERS SUPERIOR OUTCOMES OVER BOTH EXCELLENT & COMPROMISED SUBSTRATES.

PLATFORM FAMILY— EXCEED YOUR CUSTOMERS' EXPECTATIONS EVERY TIME!

Suitable for Use in Commercial, Retail, Healthcare, Education, Office, Multi-Family Applications, & More.

SELF-LEVELING UNDERLAYMENTS (SLUs) Platform's Self-Leveling Underlayments (SLUs) utilize the Synthecem cement system, which provides superior volume stability, high strength, and smooth, flat surfaces for a wide variety of flooring finishes.

PLATFORM L3

🛒 50 lb bag PL350

⬇️ >5000 psi

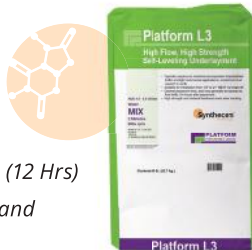
🔪 Feather – 2+”

⌚ Rapid-Application (12 Hrs)

📌 Extendable with Sand

Premium, High-Flow, High-Strength, Self-Leveling Underlayment; Synthecem™

L3 is a premium SLU that addresses out-of-level or damaged floors in residential, commercial, & institutional environments for a smooth, hard surface.



PLATFORM L2

🛒 50 lb bag PL250

⬇️ >4100 psi

🔪 Feather – 2+”

⌚ Rapid-Application (16 Hrs)

📌 Extendable with Sand

Hydraulic Cement; Reduced-Preparation, Self-Leveling Underlayment; Synthecem™

L2 addresses out-of-level or damaged floors in residential, commercial, institutional, & renovation environments for a smooth, hard surface.



PATCHING MATERIALS Platform offers patching materials with a variety of application, placement, speed, and compatibility characteristics to quickly address substrate repair.

PREPPRO FEATHER™

🛒 4 x 10 lb Bag/Case DPPF4x10

🕒 RH-Tolerant

⌚ Rapid-Drying

Trowelable, Latex-Modified, Underlayment & Patch

Permits rapid installation of floor coverings. Designed for interior use.



PREPPRO RC

🛒 50 lb Bag PPRC50

⬇️ 3/8” – Full Depth

⌚ Rapid-Drying

High-Performance, Concrete Mortar; Ramping, Trench Fill, General Concrete Repair

RC is screed mortar engineered for fast-track interior and exterior applications when you need rapid-drying and durability.



PRIMER P360

🛒 5 G Pail PP360-5

🛒 4x 1 G Jug/Case PP3604x1

📌 Alkali Resistance to pH 14, Low VOCs, Fast-Drying

Universal Primer for Underlayment and Patch; Breakthrough Acrylic Copolymer Technology

FloorPrep's P360 provides excellent coverage and easy handling. Suitable for a wide variety of porous and non-porous substrates making it the only required primer in typical SLU installations.



PLATFORM EMS

🛒 3.16 G Kit/Box PEMS3.16

🕒 Effective to 100% relative humidity (ASTM F2170-11)

📌 25 lbs MVER (ASTM F1869-11)

VOC Compliant; No Benzyl Alcohol, No Nonylphenol; High pH Resistance

EMS is a two-part, 100% solids epoxy moisture mitigation solution perfect for concrete subject to high moisture (RH). Meets ASTM F3010-13 standards when tested per ASTM E96 at 12 mils thickness.



PREPPRO SLV™

🛒 .63 G Kit/Box PPSLV63

📌 Single-Coat Application with Low Viscosity

Water-Based, Surface-Strengthening Epoxy Primer; Penetrates Compromised Gypsum or Lightweight Concrete

Provides a sound, strong, consolidated surface prior to flooring repair. Typically compatible with primers and adhesives for non-absorbent surfaces once cured.



MAY SUPPORT CONTRIBUTION TO LEED V4 CERTIFICATION OF PROJECTS IN THESE CATEGORIES

- ✓ Low-Emitting Materials
- ✓ Life-Cycle Impact Reduction
- ✓ Material Ingredient

- ✓ Sourcing of Raw Materials
- ✓ Innovation



PLATFORM™ PERFORMANCE CEMENT

📞 1-800-227-3434

✉️ info@profloorprep.com

🌐 profloorprep.com

Contact us, or scan QR Code to visit us online!



SCAN FOR SITE